

EQUIP. TYPE *R390A/URR* EXP. NO.

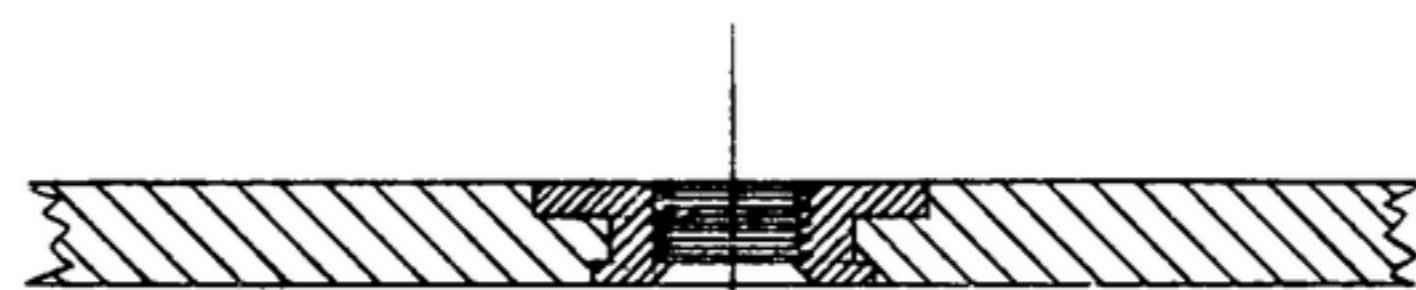
COL. 540 7942 004

NOTICE: WHEN GOVERNMENT DRAWINGS, SPECIFICATIONS, OR OTHER DATA ARE USED FOR ANY PURPOSE OTHER THAN IN CONNECTION WITH A SPECIFICALLY RELATED GOVERNMENT PROCUREMENT OPERATION, THE UNITED STATES GOVERNMENT THEREBY DISCLAIMS ANY RESPONSIBILITY FOR ANY INADEQUACIES, OMISSIONS, AND THE FACT THAT THE GOVERNMENT MAY HAVE PROVIDED, FURNISHED, OR IN ANY WAY SUPPLIED THE SAID DRAWINGS, SPECIFICATIONS, OR OTHER DATA IS NOT TO BE REGARDED AS IMPLICATION OR ENDORSEMENT AS TO THE ACCURACY OR RELIABILITY OF ANY OTHER INFORMATION, OR AS TO THE MERCHANTABILITY OF ANY GOODS OR SERVICES, OR AS TO THE FITNESS OF ANY GOODS OR SERVICES FOR ANY PARTICULAR PURPOSE, OR AS TO THE PATENTABILITY OF ANY INVENTION THAT MAY BE MADE IN CONNECTION WITH THE USE OF THE SAID DRAWINGS, SPECIFICATIONS, OR OTHER DATA.

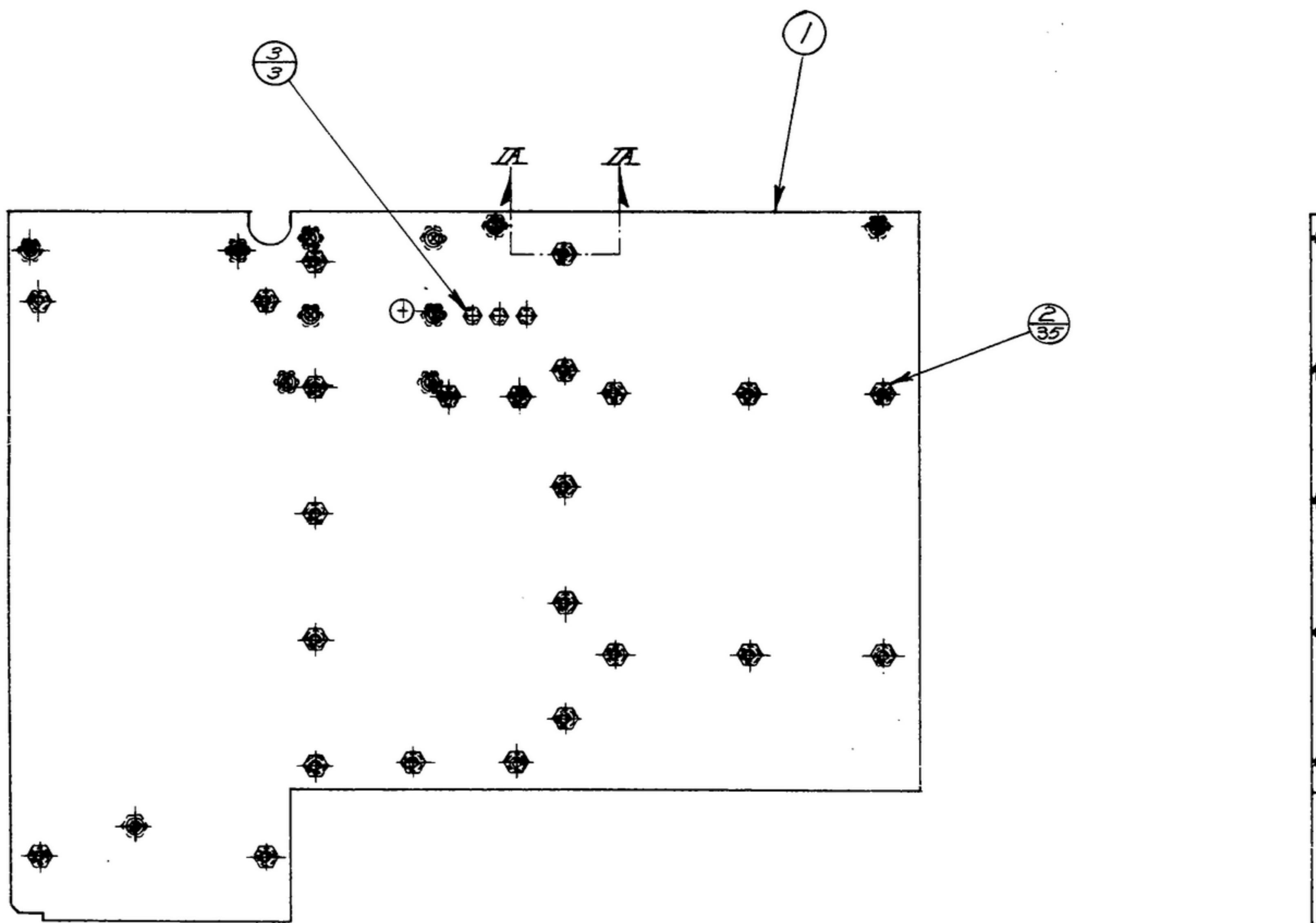
THIS DOCUMENT HAS BEEN PREPARED BY THE GOVERNMENT AND MAY BE REPRODUCED AND USED IN CONNECTION WITH ANY GOVERNMENT PROCUREMENT OR PROCUREMENT OPERATION.

FOR INFORMATION ONLY. CONTRACTOR MAY AT HIS OPTION DEVIATE FROM THESE PROCESS DETAILS.

REVISIONS			
SYM	DESCRIPTION	DATE	APPROVAL



SECTION IA-IA, SCALE 4-1



NOTES:

1. PRESS NUT(2) INTO PLATE(1) AS SHOWN.
2. (2) INDICATES CAPTIVE NUT IS PRESSED IN FROM OPPOSITE SIDE SHOWN.
3. PLATE TO BE FLAT WITHIN .032 T. I. R.
4. IN ALL SPLIT BALLOONS, TOP FIGURE IS MATERIAL LIST ITEM INDICATOR & BOTTOM FIGURE IS QUANTITY.

COLLINS PART NO.	ITEM	REQD	PART NO.	DESCRIPTION	MATL	MATL SPEC
558 0257 003	3	3	SM-C-283166-4	NUT-INSERT CAPTIVE		
558 0259 003	2	35	SM-C-283166-6	NUT-INSERT CAPTIVE		
558 0488 004	1	1	SM-D-249136	PLATE-FLOOR		

LIST OF MATERIAL *COLLINS PART NO. 558-0485-003*

COLLINS NO.	QTY	NEXT ASSY	USED ON
558-0492-007	1	SM-D-249140	SC-DL-248773
		SM-D-343619	

DRAWN *ECS* CHECKED *Rbm* APPROVED

UNLESS OTHERWISE SPECIFIED:
 DECIMAL DIMENSIONS INCLUDING HOLE SIZES MAY VARY ±.005
 FRACTIONAL DIMENSIONS INCLUDING HOLE SIZES MAY VARY ±1/64
 MACHINED ANGLES MAY VARY ±.1°
 SHEARED ANGLES MAY VARY ±.25°
 BROKEN ANGLES MAY VARY ±.1°
 ECCENTRICITY BETWEEN ANY DIAMETERS ON THE SAME CENTERLINE SHALL NOT EXCEED .010 TOTAL INDICATOR READING.
 ALL DIMENSIONS ARE FINISH DIMENSIONS INCLUDING APPLIED FINISH AND ARE GIVEN IN INCHES.

COLLINS RADIO CO.
14214-PH-51-93
 SIGNAL CORPS
 REVIEWED *PME*
 APPROVED *HLV*
PME
 DATE 28 DEC 55 SCALE 1/2"=1"

DEPARTMENT OF THE ARMY
 SIGNAL CORPS ENGINEERING
 LABORATORIES
 FORT MONMOUTH NEW JERSEY
SM-C-249133

PLATE A554-FLOOR